

SPRN Antibody (C-term)
Affinity Purified Rabbit Polyclonal Antibody (Pab)
Catalog # AP4754b**Specification**

SPRN Antibody (C-term) - Product Information

Application	WB, IHC-P,E
Primary Accession	Q5BIV9
Reactivity	Human
Host	Rabbit
Clonality	Polyclonal
Isotype	Rabbit IgG
Antigen Region	76-105

SPRN Antibody (C-term) - Additional Information**Gene ID** 503542**Other Names**

Shadow of prion protein, Protein shadoo, SPRN, SHO

Target/Specificity

This SPRN antibody is generated from rabbits immunized with a KLH conjugated synthetic peptide between 76-105 amino acids from the C-terminal region of human SPRN.

Dilution

WB~~1:1000

IHC-P~~1:50~100

E~~Use at an assay dependent concentration.

Format

Purified polyclonal antibody supplied in PBS with 0.09% (W/V) sodium azide. This antibody is purified through a protein A column, followed by peptide affinity purification.

Storage

Maintain refrigerated at 2-8°C for up to 2 weeks. For long term storage store at -20°C in small aliquots to prevent freeze-thaw cycles.

Precautions

SPRN Antibody (C-term) is for research use only and not for use in diagnostic or therapeutic procedures.

SPRN Antibody (C-term) - Protein Information**Name** SPRN**Synonyms** SHO

Function Prion-like protein that has PrP(C)-like neuroprotective activity. May act as a modulator for the biological actions of normal and abnormal PrP (By similarity).

Cellular Location

Cell membrane; Lipid-anchor, GPI- anchor

Tissue Location

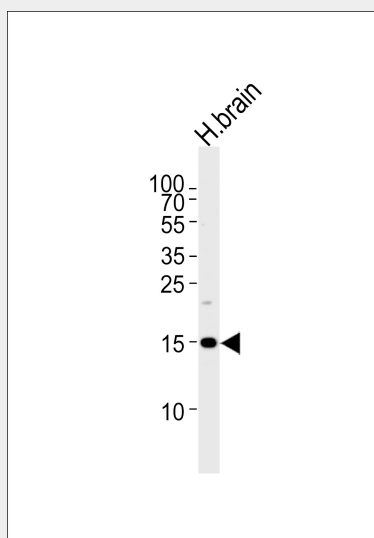
Mainly expressed in brain. In brain, it is expressed in hippocampus.

SPRN Antibody (C-term) - Protocols

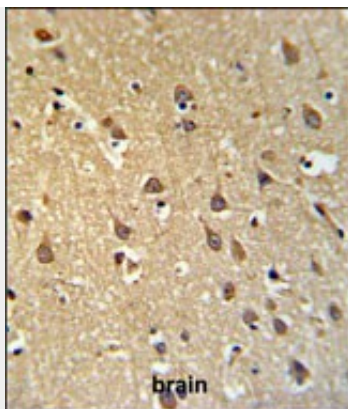
Provided below are standard protocols that you may find useful for product applications.

- [Western Blot](#)
- [Blocking Peptides](#)
- [Dot Blot](#)
- [Immunohistochemistry](#)
- [Immunofluorescence](#)
- [Immunoprecipitation](#)
- [Flow Cytometry](#)
- [Cell Culture](#)

SPRN Antibody (C-term) - Images



Western blot analysis of lysate from human brain tissue lysate, using SPRN Antibody (C-term)(Cat. #AP4754b). AP4754b was diluted at 1:1000 at each lane. A goat anti-rabbit IgG H&L(HRP) at 1:5000 dilution was used as the secondary antibody. Lysate at 35ug per lane.



SPRN Antibody (C-term) (Cat. #AP4754b) IHC analysis in formalin fixed and paraffin embedded brain tissue followed by peroxidase conjugation of the secondary antibody and DAB staining. This data demonstrates the use of the SPRN Antibody (C-term) for immunohistochemistry. Clinical relevance has not been evaluated.

SPRN Antibody (C-term) - Background

SPRN has PrP(C)-like neuroprotective activity. SPRN may act as a modulator for the biological actions of normal and abnormal PrP.

SPRN Antibody (C-term) - References

Beck, J.A., et al. J. Med. Genet. 45(12):813-817(2008)
Van den Brulle, J., et al. BioTechniques 45(3):340-343(2008)
Premzl, M., et al. Mol. Biol. Evol. 21(12):2210-2231(2004)

SPRN Antibody (C-term) - Citations

- [The Prion-like protein Shadoo is involved in mouse embryonic and mammary development and differentiation](#)
- [The prion protein family member Shadoo induces spontaneous ionic currents in cultured cells.](#)
- [Expression of the prion protein family member Shadoo causes drug hypersensitivity that is diminished by the coexpression of the wild type prion protein.](#)